

BEYOND JUST LIVING!

*Life. Enriched.*

M.V.V   
**Orchid**  
Premium Apartments @ P.M. Palem Vizag







**M.V.V BUILDERS**

“ BEYOND JUST CONSTRUCTION *a Passion.* ”

*Being a true blue Vizagite, everything about this wonderful city fascinates me. The vast open spaces, the endless greenery, the hills, the beaches, the people. Our 50+ successful ventures are a tribute to this beautiful city. Meeting the ever-growing demand for high-quality housing and our passion to build the best has put us in a league of its own. Welcome to Visakhapatnam. Live life enriched.*

**– MVV Satyanarayana,**  
Managing Director & Member of Parliament



**50+** Ventures Completed



Premium Quality



Timely Delivery







BEYOND JUST AN ADDRESS *a Lifestyle.*

*It takes more than just brick and mortar to build dwellings. A love for life and living life to its full plays lead role. With no room for compromise, the beautifully crafted apartment homes are a testimony to the high degree of quality we subscribe to. A rare obsession to carefully create comfort is evident in every square foot of this wonderful premise.*

*-5000 Sq Yds Premises*

*-124 Two & Three BHK Luxury Apartments*

M.V.V.   
**Orchid**  
Premium Apartments © P.M. Palem Vizag





BEYOND JUST BRICK & MORTAR!

*Happening Life Space.*

**PROJECT HIGHLIGHTS**

*GVMC Approved project*

*5000 Sq Yds Premises*

*G+7 Levels*

*124 Two & Three BHK Apartments*

*1081 - 1688 Sft areas*

*East & West-facing Units*

*Deluxe quality construction*

*No common walls*

*Vastu compliant*

*Jogging track*

*Elegant Designer landscaping*

*2 Level Parking*

*24 hr Water supply*

*24 hr Professional & Electronic Surveillance*

*100% Power Back-up*

M.V.V.   
**Orchid**  
Premium Apartments @ P.M. Palem Vizag





BEYOND JUST SOME FUN.

*Celebration of life.*

Only when every member of the family finds their calling, does a premise transform into a happy life space. A variety of recreation and engaging options ensures every resident lives life to its fullest. Be it unwinding through sport, fitness, networking, entertainment and the vast stretches of greenery.

**EXCLUSIVE AMENITIES**

- Fully Equipped Gymnasium
- Indoor Children Play Area
- Function Hall
- Beautiful Outdoor Landscaping

BEYOND JUST PROXIMITY

*Absolute Convenience*

If there's a city that's racing towards transforming itself to match international standards, it is undoubtedly Visakhapatnam. And, while choosing your life space, location makes a big difference. Identifying the right location that spells convenience whichever way you look at, is second nature to us. And, MVV Orchids, located in PM Palem near Madhurawada is where the future is about to unfold

**LOCATION HIGHLIGHTS**

**5** Mins.

YSR ACA VDCA Cricket Stadium

NH No 16

MVV City

**15** Mins.

Bus & Railway stations

Indian Institute of Management

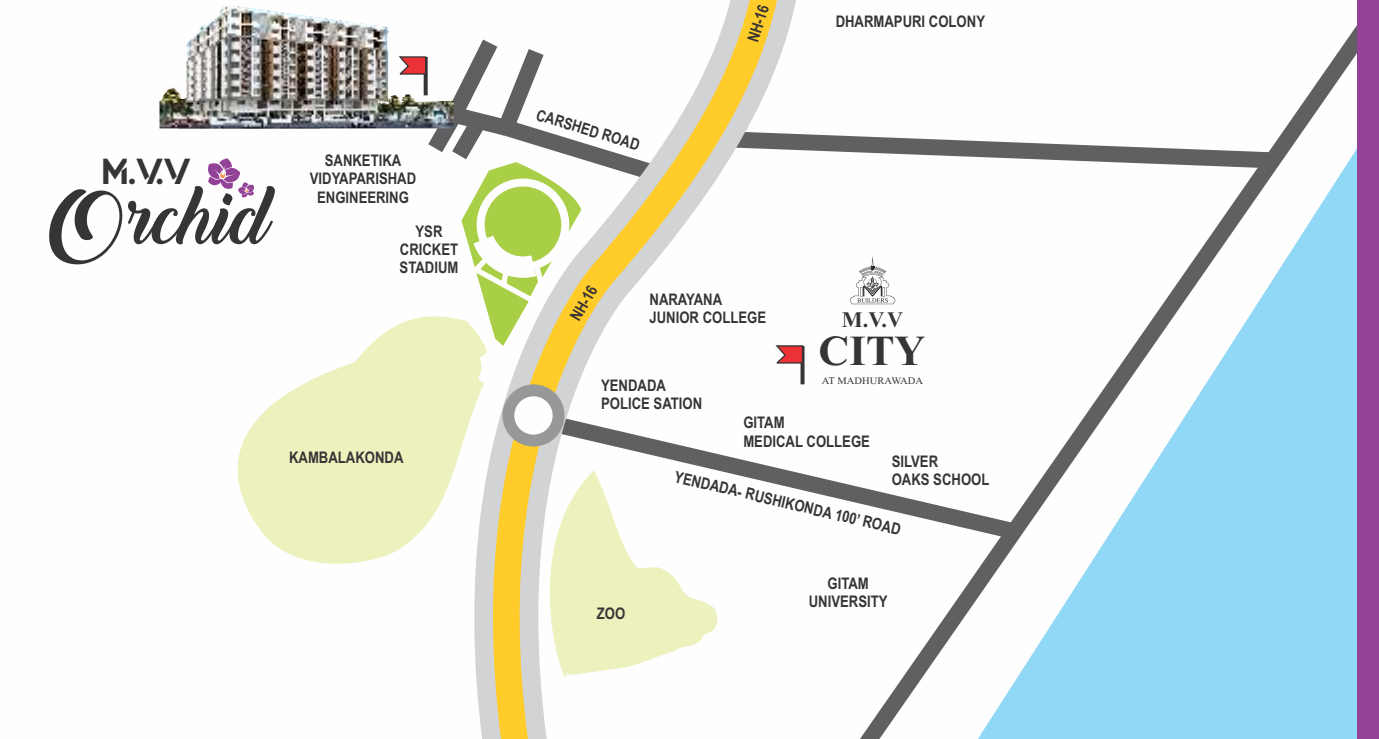
**10** Mins.

GITAM University

Health City

**25** Mins.

Proposed Intl. Airport at Bhogapuram



Location Map (Not to Scale)

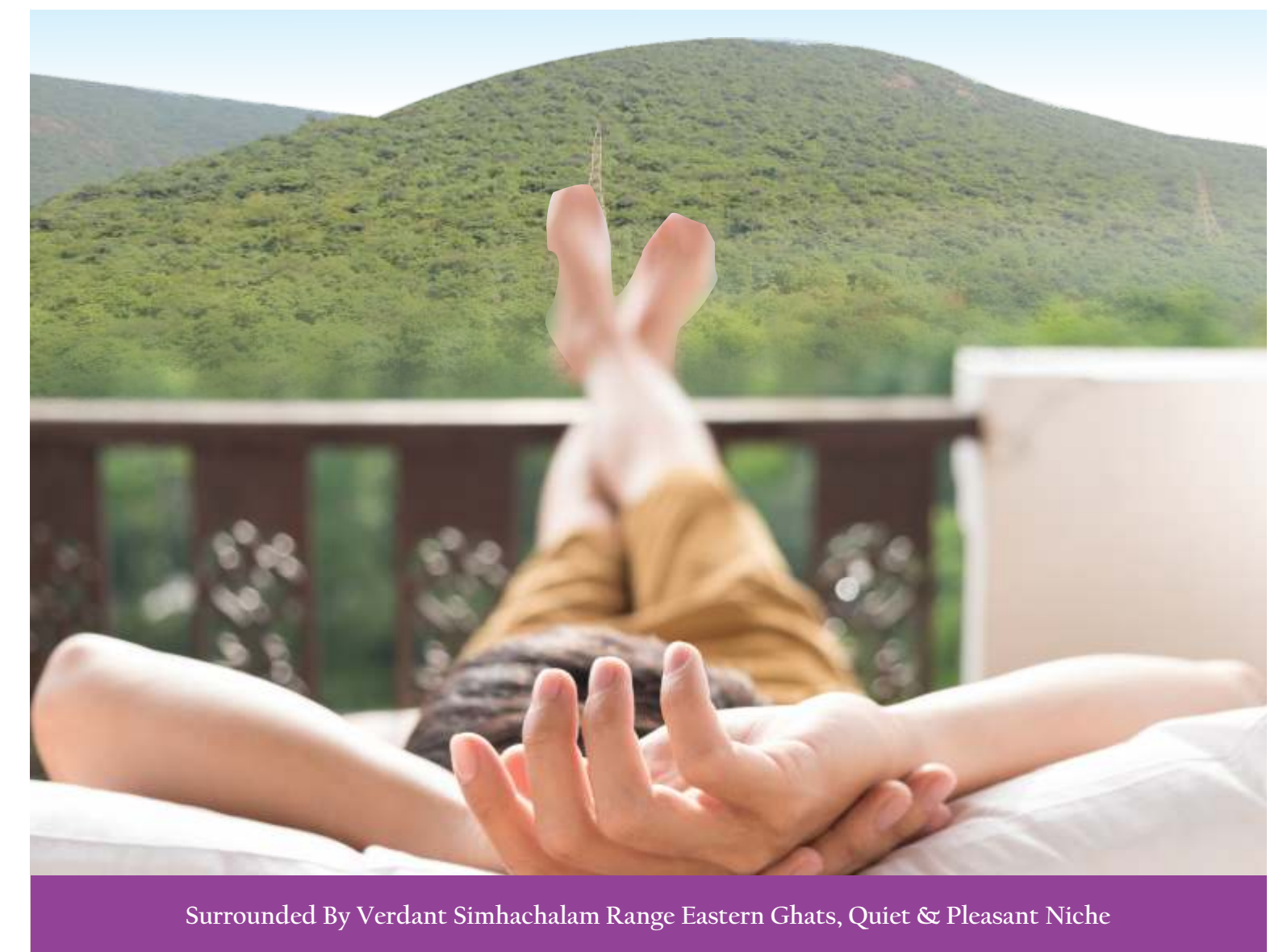
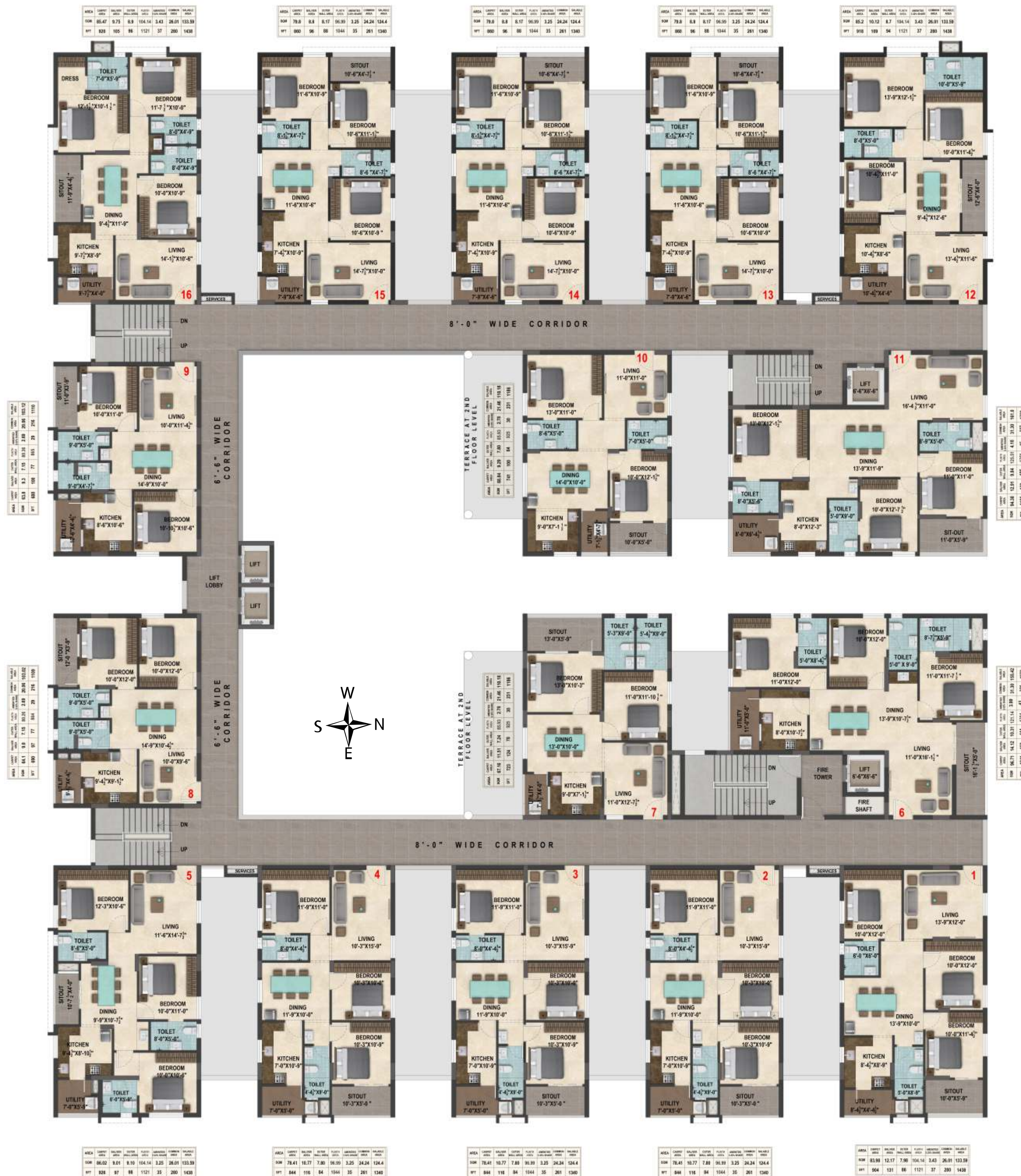




M.V.V  
**Orchid**  
 Premium Apartments @ P.M. Palm Vizag

BEYOND JUST A BLUEPRINT.

*Life Unfolding.*



Surrounded By Verdant Simhachalam Range Eastern Ghats, Quiet & Pleasant Niche

TYPICAL FLOOR PLAN



## SPECIFICATIONS



### FOUNDATION & STRUCTURE

Seismic zone-2 compliant RCC framed structure

### SUPER STRUCTURE

In table moulded fly ash brick with cement mortar 6" thick for exterior walls and 4" thick for interior walls



### DOORS & WINDOWS

Main Door Frame & Shutter: Duly polished Teak wood door frame.

Internal Door With Shutter: Well seasoned Sal wood frame, factory moulded flush doors, duly painted including high quality hardware

Windows & French Doors: UPVC of reputed make



### PAINTING

Internal Walls & Ceiling: 2 Coats of acrylic emulsion paint over putty finish

External Walls: 2 Coats of exterior emulsion paint on textured surface



### FABRICATION WORKS

Balcony Railings: Stainless steel with toughened glass



### KITCHEN

Adequate space with granite top platform with stain steel sink

Drinking water point (AquaGuard/GVMC) for sink shall be provided

Drainage point for sink shall be provided

Power points 15 Amp/5 Amp shall be provided for grinder and mixie



### ELECTRICAL WORKS

Wiring: Concealed copper wiring in conduits for lights, fans and power plug points etc.

Power Outlets: Power outlets for air-conditioners in all bedrooms and other identified areas

Power outlets for geysers in all bathrooms

Power plugs for all cooking appliances

MCB: MCB for each distribution board of reputed make

Switch Boards & Sockets: All electrical switchboards and sockets are of reputed make

Power Backup: 100% Power backup through generators to the building (except A/Cs, geyser)



### FLOORING

Drawing, Dining & Living Room: 800mm X 800mm Double charged vitrified tiles with 4" skirting

Other Bedrooms & Kitchen: Premium quality double charged vitrified tiles

Bathrooms: Acid-resistant, anticked premium quality ceramic tiles

Balconies: 1 X 1 Anticked ceramic tiles

Utility: Premium quality rustic finish ceramic tiles

Corridors: Scratch-proof/Rustic finished ceramic tiles

Staircase: 20 mm granite slabs for steps



### TOILETS

Sanitary ware: Wall hung EWC of reputed make with concealed flush tank

CP Fittings: All CP fittings are of reputed make

Shower Mixer: Hot & Cold water mixer with shower of reputed make

Geyser Points: Provision for geyser points in all toilets



### TELEPHONE, INTERCOM & BROADBAND COMMUNICATION

Telephone points, provision for internet connection, cable TV connection in Master bedroom & living room



### SECURITY SYSTEMS

24 Hrs surveillance system

CC TV cameras will be placed at designated areas

Solar fencing throughout the boundary

Intercom facility to each flat connecting to Security



### WATER SUPPLY SYSTEM

24 Hrs water supply by hydro-pneumatic system

STP: A common sewage treatment plant is being provided for the entire project

Fire Fighting: Fire & safety as per norms

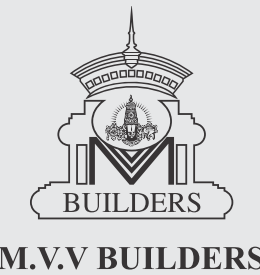


### LIFTS

2 High speed, 10-passenger capacity lifts and 1 five lift.



## A GLIMPSE OF MVV PREVIOUS PROJECTS



M.V.V BUILDERS



P R O M O T E R S



**M.V.V BUILDERS**

#4-62-1, Plot No.21, Near Post Office  
Lawson's Bay Colony, Visakhapatnam-17  
Ph: 0891 2506501, M:96666 66600  
E-mail:mvvbuilders@yahoo.co.in  
www.mvvbuilders.com

A R C H I T E C T S



**Vistaas Architectural Consultants**

• M U M B A I • H Y D E R A B A D • P U N E • V I Z A G

E-mail:vistaashyderabad@gmail.com  
www.vac-india.com

S T R U C T U R A L D E S I G N E R S

